

size80mm\*(90mm\*6)

## 监控摄像头

### 操作说明书

感谢您购买本产品，本机采用了独特的超便携式设计，使它可以应用在各个领域，为您带来方便，安全，丰富多彩的日常生活，请按照说明中的步骤正确设置您的摄像机。

### 目录

- 一、准备工作
- 二、WiFi 远程监控操作
- 三、设备分享
- 四、注意事项

#### 一、准备工作

##### 1.1 重置设备

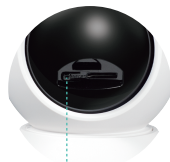
**复位方法：**摄像机通电后，长按复位键 3-5 秒，听到提示音后，复位完成，等待重启即可。

##### 1.2 APP 软件下载

手机扫描二维码下载“小鹰看看”APP。

Android 系统的手机可在手机应用市场搜索“小鹰看看”下载；

iOS 系统的手机在 App Store 搜索“小鹰看看”下载。



复位键



#### 1.3 注册用户

APP 安装完成后，打开 APP，点击“注册”，可使用手机或者邮箱注册，输入对应账号、接收验证码，设置密码即可完成注册。

**注意：**登录账号时，应选择用户当前所在地的相对应区域。



区域选择如图所示

#### 二、WiFi远程监控操作

2.1 当完成前面的准备工作后，打开手机 APP，在设备列表页面，点击右上角“+”，扫描摄像机机身底部的二维码，未找到二维码，请选择 WiFi 摄像机。

2.2 选择 WiFi，并输入密码，点击下一步。

2.3 将二维码至于镜头正前方 15-30 cm 左右进行扫描，听到“嘟”声后完成扫码，连接成功后，将自动跳转到下一步。

2.4 如连接失败，请先重置设备，然后选择 AP 热点配置，跳转到手机无线 WiFi 设置界面，选择连接“@IPC-XXXXXXX”设备热点，连接上热点后返回 APP，再进入摄像机的设置更换网络适配，当设备提示联网成功即可开始使用功，等待完成即可开始使用。



#### 三、设备分享

3.1 邀请家人下载并安装“小鹰看看”APP，注册并登录。

3.2 设备主人可点击设备分享，并出示分享的二维码。

3.3 配置访客权限，开启权限，被分享者就可对设备进行功能设置，若关闭就只能观看视频。



#### 四、注意事项

- 4.1 设备支持 2.4G 或 5GWiFi(支持频率因机器不同版本或有所区别) 连接方式不一样，添加摄像机前确保手机为正常连接 WiFi 状态。
- 4.2 仅支持文件系统为 FAT32 和 EXFAT 的 TF 卡，最大支持 128G TF 卡。
- 4.3 设备使用循环录像技术，当 TF 卡已满时，无需手动删除，摄像机自动覆盖最早的录像。
- 4.4 配网后，设备将与 App 账户绑定，若要重新绑定新账户，请将设备删除或将设备复位后才能绑定新账户。
- 4.5 请不要将设备安装在高温，潮湿或大量灰尘，烟雾等恶劣环境中，否则可能造成设备损坏。
- 4.6 如果更换了路由器，请将设备重新复位后，重新配置新的 WiFi。

## Security Camera

### Guide Manual

Thanks for buying this camera, it designed as extremely portable,make it can use in different application, aim to bring you convenient,safety daily life, please according to this user guide to set your camera correctly.

### Contents

- 1.Preparation
- 2.Wi-Fi remote monitoring operation
- 3.Device Sharing
- 4.Precautions

#### 1.Preparation

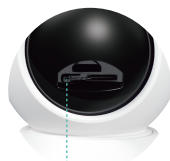
##### 1.1 Reset Camera

**Reset method:** After the camera is powered on, long touch the reset button for 3-5 seconds, after hearing the prompt tone, the reset is complete and just wait for the restart.

##### 1.2 APP Download

Scan the QR code to download the APP 'O-KAM (Pro)' .

Android smart phones can search the 'O-KAM' in Google Play to download. iPhone can search the 'O-KAM Pro' in App Store to download.



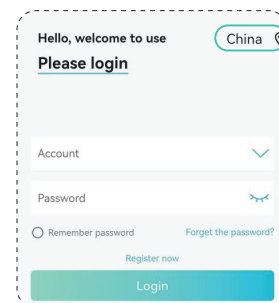
Reset button



#### 1.3 Register Account

Open the downloaded APP,click 'Register' , choose sign for by phone number or email, after enter verify code and password set, sign for completed.

**Notices:** You should choose where you located correctly when you login.



as below picture

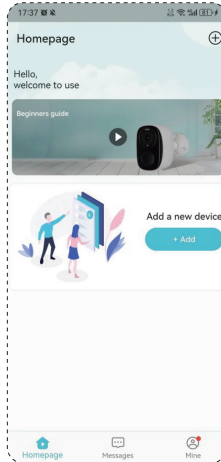
#### 2.WiFi remote monitoring operation

2.1 After preparations finished, open the APP 'O-KAM(Pro)', click the 'Add ' and scan the QR code at the bottom of the device. If the QR code is not found, please select Wireless camera.

2.2 Choose Wi-Fi and enter the password to connect, click 'Next'.

2.3 Scan the QR code about 15-30cm in front of the lens, complete the scan after hearing the 'beep' sound, and automatically jump to the next step after the connection is successful.

2.4 If the connection fails, please reset the device first, then select AP hotspot configuration and will jump to Wi-Fi setup interface, choose to connect Wi-Fi called '@IPC-XXXXXXX' once connected, back to the APP, and then enter the settings of the camera to change the network adaptation. When the connection is successful, you can start using it.

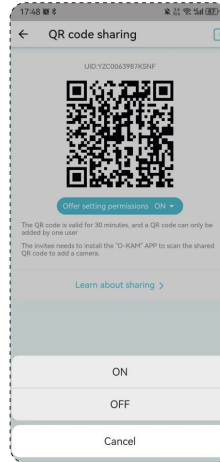


#### 3.Device Sharing

3.1 Invite your family to download the APP 'O-KAM (Pro)' , register and log in.

3.2 The owner can click 'share' and show the QR code.

3.3 Turn on the permissions, the shared user can set up the device, If it is turned off,they just only watch the video.



#### 4.Precautions

- 4.1 The device supports 2.4G or 5G Wi-Fi (support frequency due to different versions of the machine or different) connection is not the same, make sure the phone is normally connected to Wi-Fi before adding the camera.
- 4.2 Only support TF card with file systems of FAT32 and EXFAT, max memory capacity is 128GB.
- 4.3 The device uses cyclic recording technology, when the TF card is full, there is no need to manually delete, the camera will automatically cover the earliest video.
- 4.4 After network distribution, the device will be bound to the App account, if you want to re-bind a new account, please delete the device or reset the device before binding a new account.
- 4.5 Please do not install the device in high temperature, humidity or a lot of dust, smoke and other harsh environments, otherwise it may cause damage to the equipment.
- 4.6 If you have replaced the router, please reset the device and reconfigure the new Wi-Fi.